

THE WORX

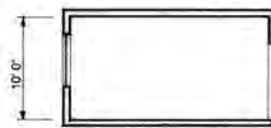
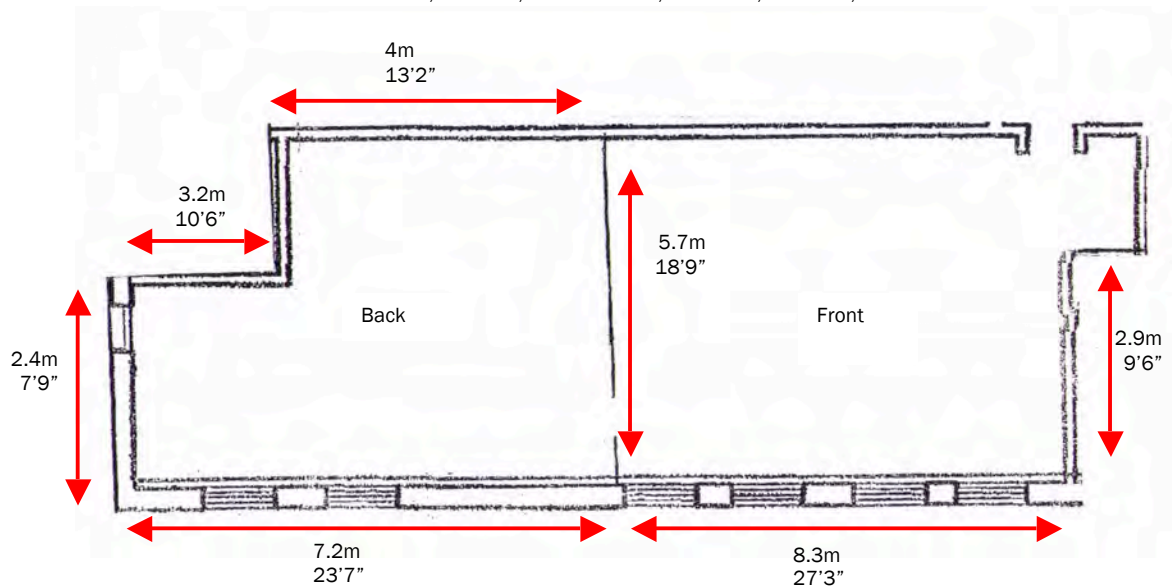
STUDIOS • LONDON

STUDIO NINE

STUDIO NINE: CASTING / FOOD SHOOT
GROUND FLOOR

850 SQ FT (front 515sq' / back 335sq')
78 SQ M (front 47sq m / back 30sq m)

FACILITIES: HALF DAYLIGHT/ HALF BLACKOUT, WOODEN FLOOR / DARK GREY LINO FLOOR, GROUND FLOOR ACCESS, FRIDGE, MICROWAVE, COOKER, STEREO, WI-FI



SECTION

